



December 2021

WEBPAGE: <http://www.bssf-miami.org/>



Facebook- Public
Bromeliad Society of South Florida

http://www.facebook.com/groups/BromeliadSSF/?bookmark_t=group



Facebook - Members
Bromeliad Society of South Florida

<http://www.facebook.com/pages/Bromeliad-Society-of-South-Florida/84661684279>



FCBS Newsletter

<https://www.fcbs.org/newsletters/FCBS/2021/11-2021.pdf>

DIRECTORS

Barbara Partagas, Past President
Maureen Adelman, President
Karen Bradley, VP
Olivia Martinez, Treasurer
Lenny Goldstein, Secretary
Maureen Adelman with Stephanie LaRusso, Editor
Denise Karman, Director
Stephanie LaRusso, Director
Richard Coe, Director
Sandy Roth, Director

COMMITTEES

Advertising: TBD
Door Prize: Alan Herndon
Education: Alan Herndon
Hospitality: Elaine Mills
Library: Barbara Partagas
Membership: Elaine Mills/Melody Ray
Mem. Plant Sales: Alex Bello
Refreshments: Sandy Roth
Field Trips: Lori Weyrick
Community Service: Carl Bauer

**December 21,2021 LIVE MEETING 7:00 PM
GARDEN HOUSE
HOLIDAY PARTY AND ANNUAL AUCTION**

**BRING A SIDE DISH AND WRAPPED PLANT
DONATE A PLANT TO THE AUCTION**

BSSF Covid Rules

To Insure Your Safety the Following are Covid Rules for In-Person Meetings:

- MASKS ARE NO LONGER REQUIRED
- FOOD WILL BE SERVED
- There will be one entry and one exit at the back of the Garden House. The kitchen entry will be locked.
- If you do not feel well or have a temperature – please stay home
- Social distancing will be observed at buffet line, payment line.
- Dsinfecting wipes, and hand sanitizer will be available at the entry.

**HOLIDAY PARTY AND AUCTION
DECEMBER 21 7 PM
AT FAIRCHILD!**

President's Message

We are ending this eventful year with a bang. Our holiday party takes place Tuesday, December 21 at 7 pm. At the same time we are holding our annual auction which took place online last year. What a difference a year makes. Come and take a look at the plants, grab some delicious dinner and sit back and enjoy the auction. We will also be starting our membership drive at the party to make it easier for you to renew. You can sign up and pay right at the front entry. Dues are the same as 2020, before the pandemic. For those of you we haven't seen in awhile - PLEASE COME BACK.! We are back to our pre-covid programs with great speakers, lots of food and friendship. For the holidays, we traditionally pick a worthy cause for our community service donation/project. In past years we chose bromeliad related projects. But for the second year in a row our board voted to make our donation for the many people who have been affected by Covid. \$250.00 has been donated to the Chapman Partnership for the Homeless in south Dade. Thank you to our members for the support that makes this donation possible. On a final note, this will be my last President's message. It has been an honor to guide our society through the pandemic and come out on the other side financially intact and with a loyal core membership. Best of luck to our new president, Tina Severson.

SEE YOU AT THE PARTY!

MAUREEN

HOLIDAY PARTY

Date : Tuesday, December 21, 2021

Time: 7PM - Fairchild Garden House

What to Bring:

- A nice plant to donate to the auction (optional)
- A side dish for dinner, or appetizer, or rolls, drink (homemade eggnog?)
- A wrapped plant for the secret plant exchange (optional but you cannot pick a plant if you do not bring one)
- NON-MEMBERS: \$10.00 charge for dinner
- NON-MEMBERS who are only coming for the auction do not have to be there until 7:30. You will not receive a ticket for dinner. We will have non-table seating for you.

MEMBERSHIP DRIVE

Time again for our annual membership drive.

If you recall BSSF did not charge dues for 2021 as we felt we had not been able to offer quality programming. For 2022 we are back to our great speakers, refreshments and the socializing that our members love.

Please take a moment to renew your membership. The renewal form is at the back of the Advisory. Dues remain \$25.00 per person and \$35.00 per couple.

You can also renew your membership at our holiday party and auction. We will have forms there and can accept your payment in cash or check.

The dues help provide funds for our speakers, refreshments, rent for Fairchild, and fees for our annual show among many other things.

The deadline for renewal is March 1, 2022 in order for you to be included in the FCBS roster.

NOVEMBER MEETING

GARAGE SALE

The Garage Sale is scheduled for Saturday, January 15, 2022, 8 am to 2 pm. at the home of Maureen Adelman, 9421 S.W. 134 St. Please save your household items, books, clothing, baby items, kitchen items or anything you no longer use. Dropoff will be 4-7 pm on Friday, January 14. If circumstances preclude the Friday dropoff call Maureen at 305 255 3895.



SHOW CORNER

by Barbara Partagas

Dear BSSF Members: What makes a successful show is the volunteers who participate in all aspects of the event. Give an hour, give a day. BSSF is all about the people and the plants. Please think about how you can help.

- Sandy Roth can always use help with set up of meals and snacks for members and judges.
- If you are willing to host one of our traveling judges for one night, please advise me.
- Thursday we need you if you can help set up tables or art in the morning or help with plant placement in the evening.
- Friday we need you if you can clerk.
- Saturday and Sunday we need an individual or couple who can manage the Member Plant Sales.
- Sunday we need people to clean up at 4 pm.

Volunteer sign up sheets will be passed around at our January meeting.

Answer to last month's challenge question: Jeri Parrish

Keep watching your plants for the ones that stand out.

Happy Holidays,

Barbara Partagas, Show Chairman



WORLD CONFERENCE

The deadline is approaching for your discounted entry fee for the world conference. After December 31 the fee will be raised. Please see the schedule and registration sheet at the back of the Advisory.

In Case You Missed It

by Leonard Goldstein

A not-quite-post-COVID, but nevertheless enthusiastic crowd of 31 souls gathered on November 16 to hear a familiar voice talk about a self-styled eccentric. Alex Bello, past president of the BSSF, presented a program titled, “Taste of the Tropics from the KING of Bromeliads!” His subject was the Texan-turned-Cost Rican grower extraordinaire, Chester Skotak, Jr. This was not the first time we’ve heard about him, but each presentation further informs us of the meticulous approach he takes to his craft.

Over a 40-plus-year career, Chester has made horticultural leaps he probably never could have predicted. Alex himself admitted to a hobby gone out of control over a 20-year span. That led to last year’s opening of a businessplace, and a second greenhouse there is on the way. Alex made it clear that Chester is his idol, “one of the coolest and quirkiest guys” he’s ever known. And Alex is particularly fond of the variegated and albo-marginated bromeliads that form the linchpin of Chester’s hybridizing. Of the more than 1,000 Neo varieties that Alex grows, about 40% are Chester’s creations. Before jumping further into the subject of his program, Alex talked a bit about bromeliad culture. He doesn’t fertilize a lot, because that

would run the risk of greening up the plants and making them leggy. He grows his plants hard, under 60% shadecloth, using a little bit of Nutricote. He never applies liquid fertilizers.

The emphasis of Chester’s work has been on Neoregelias, particularly crosses involving *N. carolinae* and *N. carcharodon*. Central Floridian Eloise Beach is, Alex submitted, perhaps the best Neo grower around, in addition to possessing an imaginative knack for naming Skotak crosses. Before offering new releases for sale, she watches them for 3-4 years to evaluate their stability and suitability for entry into the trade. Alex acknowledged that many of Chester’s hybrids merit close looks to discern how they differ from one another, but to the practiced eye there are subtle distinctions. His new releases in 2019 included a couple that are variegated or albo-marginated. One, ‘Bazooka,’ is about 2 ft. across and 2½ ft. high. Other worthies include ‘Pandemonium’ and ‘Paladin.’

Alex embarked on a comprehensive survey of Skotak crosses, and frequently referenced pairs that are *reversed*, by which he means that a variegated form is complementary to an albo-marginated form. ‘Super Sonic Boom’ is huge, and he also likes ‘Hot Cargo’ and ‘Kinetic Energy.’ ‘Polar Vortex’ is not very stable, i.e., it is unable to sustain its colorful features in offspring; Alex estimated that 60% of Chester’s crosses remain

'stable. 'Holy Smoke' is the reverse of 'Polar Vortex.'

The names of additional Neo crosses rolled off Alex's tongue: 'Crazy Rabbit,' 'Jetsetter,' 'Tremendous Tiger.' The latter, he noted, is a little touchy with respect to moisture. He has adjusted his own mix for the hybrid, adding 40% perlite to Pro-Mix. Drainage is the key to success. In dealing with offsets of 'Tremendous Tiger,' he recommended allowing the base to heal for a couple of days before planting.

'Wide Load' is perfectly round, but not easy to grow. 'Tantrum' is a small hybrid. Alex observed that minis are good for terrariums or for mounting on driftwood. 'Electrified,' 'Shell Shocked,' and 'Speed Demon' are other notable Skotak crosses.

Alex moved on to some of Chester's 2020 releases. 'Zenith' and 'Ambush' are two for which demand has been great; buyers are willing to pay hundreds of dollars apiece. 'Snake Charmer' was an instant big seller for Tropiflora. Its reverse is 'Snake Charmer.' 'Tigerama' is very sensitive to water and will rot easily. 'Sanctuary' is compact, with thick leaves. 'Centrifuge,' on the other hand, features broad leaves. 'Snapdragon' is a mini. Alex cautioned against being smitten with white leaves; ultimately they mean death of the plant from lack of chlorophyll.

Among older Skotak hybrids of note are 'Electra,' whose reverse is 'Spectra.' Others include 'Whiz Bang,' 'Star Ship,' 'Swanky,' 'Frenzy,' and 'Bonus Pride,' 'Star Blast,' a very stoloniferous mini, is the reverse of 'Star Fire,' He also commended 'Tintania,' whose bottom leaves lose color and create a nice contrasting skirt for the younger leaves above.

Some huge Neo hybrids are coming along soon: 'Untamed Tiger,' 'Pure Venom,' 'Pizzazz,' 'Duraflor,' 'Tigerlicious,' 'Claws,' 'Freak Out,' 'Supercharged,' 'Smoken Hot,' 'Frenzy,' 'Rebellion,' and 'Gigabyte.' 'Fenestralis Striated' is a slow-grower. 'Hypershock' is one that grows darker in South Florida than in Central Florida. 'King Cobra' is the albo-margined reverse of 'Snake Charmer.' 'Tidal Wave' has waves of color. 'Fire Bomb' is a large-growing cross. 'Virtuous,' a new release, 'Energized,' and 'Plum Colossal' are rare Skotak hybrids that are neither variegated nor albo-margined. 'Inferno' is the reverse of 'Meltdown,' a cross about the size of 'Picasso.'

During the course of the program, Alex made a few sidetrips into Chester's crosses using other genera. Aechmea 'Wild Ace,' a sport of *A. chantinii*, was released about four years ago. Not intended for sale in the U.S., this small plant was sent to Thailand. *A.* 'Goldmine' is a variegated *A. blanchetiana* that features a

red inflorescence. He also singled out *Canistrum* ‘Canary Royale.’

Alex emphasized a significant point we’ve heard more than once before: Chester is very discriminating about which crosses he releases. It might take him 8-10 years to develop and evaluate a new plant. And he, and later Eloise, throw out hybrids that many of us would love to have, plants that are great, but simply not perfect.

Alex concluded his program with this observation: COVID-19 has pushed online sales of bromeliads—and other tropical plants, for that matter—to new levels.

Neo. Johannes ‘von Welk’
will be at the auction.



UPCOMING EVENTS

Pinecrest Gardens
Fine Arts Festival
January 22-23, 2022

Night Garden at Fairchild
November 12 - January 2
6-10 pm

BSSF Annual Show
March 24 - 27, 2022
Fairchild Garden

BSI World Conference
June 8-11, 2022
Hyatt Regency, Sarasota

Till. ‘Hildae’ in bloom (6 ft. tall)



ASK DR. BROM:

Dear Dr. Brom: I need some ideas for decorating with bromeliads for the holidays. How about directions for making a bromeliad tree?

Frames for a bromeliad tree are hard to find and you are better off making one on your own. I saw a Christmas display ladder, not even a tree frame, for \$180 on the internet. Add to that the cost of the bromeliads. Who has at least 60 red bromeliads hanging around?

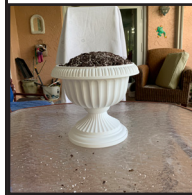
How about directions for a reasonable project that won't leave you broke?

This is an arrangement that can be used as a centerpiece, in your front hall or outside the front door. After the holidays the embellishments can be removed and you have a nice arrangement for the rest of the year.



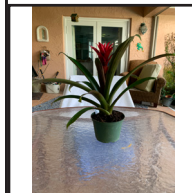
1. Find a pot, preferably from your own collection to save money. This pot, an urn, was purchased from Walmart for \$13. Drill a hole in the bottom for drainage. A 3/8" drill bit works well. Spread pebbles on the bottom for drainage. I use broken seashells.

2. Fill the pot with soil to form a mound. I use 3/4 peat moss and 1/4 perlite.



3. Now you are ready to place the plants. In traditional floristry you need 3 types of plants for an arrangement. The

thriller (the focal point plant), the fillers (complimentary plants), and the spiller (a plant that spills over the edge of the pot).



Thriller



Filler



Filler



Spiller

In floristry, as in landscaping, always plant in odd numbers which gives a more natural appearance. So the thriller is 1 red guzmania, the fillers are 3 red celosia and 3 white pentas,

and the spiller is a chartreuse pothos. The plants can vary depending on what you have available. Vrieseas and Lutheria splendens also make nice focal points. There are some nice cactus with red tops you might be tempted to use as fillers but this is not recommended as cactus have different soil and water requirements.

4. Place the plants. The top of the focal point plant should be 1 1/2 times the height of the planter. This creates a pleasing proportion. The pot is 10" so the top of the focal point plant should be 15" above the top of the pot. For a larger pot you might want to use 3 focal point plants.



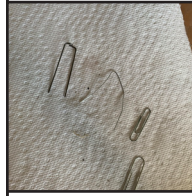
Place the filler plants around the focal point plant, alternating red, then white, leaving a place to the right of center for the spiller. Place the spiller just to the right of the center filler plant. The chartreuse



in the pothos pops. You could also use ivy or sweet potato vine. Water the pot to settle the soil. Add more soil if needed.

5. Fill all empty areas with Spanish moss or sheet moss. Sheet moss gives a more natural look and Spanish moss

gives a more formal appearance. To secure the moss use floral clips or unfolded paper clips.



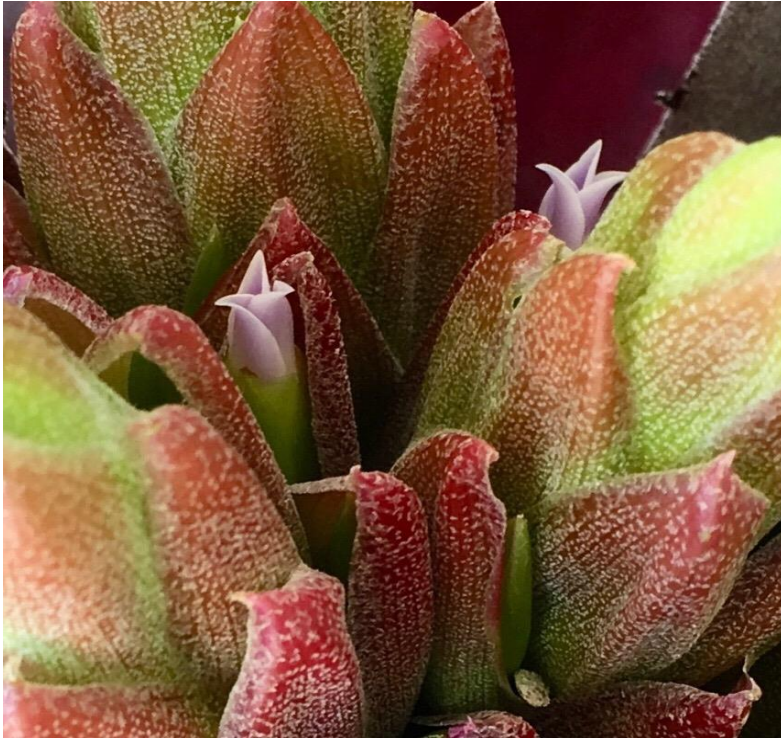
6. Now you are ready for embellishments. Go through your holiday decorations looking for ornaments, garlands, berries, shiny stuff. Start filling in with the holiday decorations remembering to always work in odd numbers, i.e. 1,3 or 5 ornaments.

7. Add a bow at the base. To make a floral bow, start with a wide wired ribbon. Fold the ribbon over to make 5 loops on both sides, folding the ribbon over in the middle each time.



Secure the bow in the middle with floral wire (available at Michael's) and attach to the base of the pot with more wire or small ribbon. The costs can range from nothing if you use your own supplies to about \$75.00. Enjoy!

OR you can bid on this piece at the auction Tuesday night.



World Bromeliad Conference June 8-11, 2022 Hyatt Regency Sarasota

World Bromeliad Conference 2022

Join Bromeliad lovers from around the world at the Bromeliad Society International's 24th World Bromeliad Conference which will be held in Sarasota for the first time!

Attendees will have the opportunity to go behind the scenes at **Marie Selby Botanical Gardens** (with its collection of over 1300 Bromeliad species) and **Michael's Bromeliads** and **Tropiflora** with their collector-grade Bromeliads.

Mix and mingle with attendees from all over the world at the Hyatt Regency Sarasota with its beautiful waterfront setting and nearby fine dining, beaches, shopping, museums, and other sightseeing opportunities.

Join us for **THE BIG SHOW** at **World Bromeliad Conference 2022** with this amazing opportunity to learn, grow and explore!

Invited Speakers:

Elton Leme – Brazil
Eric Gouda – Netherlands
Ivon Ramirez – Mexico
Julián Aguirre-Santoro – Colombia
Graeme Barclay – New Zealand
Bruce Holst – Florida
Cristy Brenner – California
Jerry Raack – Ohio

Events:

Conference Opening/Reception
Judged Plant Show
A Huge Plant Sale
Optional Bus Tours
Behind-the-Scenes visits to:
Michael's Bromeliads
Tropiflora
Home Garden Visits
Guided Behind-the-Scenes Tour
Marie Selby Botanical Gardens
Banquet with Keynote Speaker
Rare Plant Auction



www.BSI.org

WBC 2022 Schedule

Tuesday, June 7, 2022 (pre-conference)
BSI Board Meeting, Judges School, and
Plant Show Entries

Wednesday, June 8, 2022

Morning:
Optional Bus Tour to **Michael's Bromeliads**
plus a Light Lunch & Home Garden Visit
Plant Show Entries

Afternoon:
Plant Show Judging
Plant Sale Setup

Evening:
Official Conference Opening, Reception and
Welcome Address

Thursday, June 9, 2022

Morning:
Optional Bus Tour to **Tropiflora**
plus a Light Lunch & Home Garden Visit

Afternoon:
Plant Sale Setup
Plant Show Open for registrants only

Evening:
Cocktail Reception
Plant Sale Open for registrants only

Friday, June 10, 2022

Morning:
Behind-the-Scenes Bus Tour (registrants only)
to **Marie Selby Botanical Gardens**

Afternoon:
Four Speakers

Morning and Afternoon:
Plant Sale Open
Plant Show Open

Evening:
Rare Plant Auction

Saturday, June 11, 2022

Morning and early afternoon:
Four Speakers

Morning and early afternoon:
Plant Sale Open
Plant Show Open

Evening:
Banquet with Keynote Speaker

More Information

For more information on WBC 2022,
just go to the BSI website at
<https://www.bsi.org> and click on the
WBC menu choice near the top.

After you register for the conference,
you can also make hotel reservations at
a special price with free parking and no
resort fees.

Conference Registration:

\$315 if paid by December 31, 2021
\$335 from Jan. 1, 2022 to May 25, 2022
\$395 at the conference

BSI Membership

To register for the conference, you need
to become a BSI member if you aren't
one already. Membership rates start at
only \$15 for first-time members.

Join the BSI at <https://www.bsi.org>. Start
by clicking on the **WBC** menu and then
select **WBC REGISTRATION**.

BSI MEMBERSHIP RATES			
Journal	First-Time Member*	Indiv. Renewal	Dual Renewal
ONE-YEAR RATES			
Electronic Only	\$15	\$25	\$35
Printed Journal			
US Bulk	\$35	\$50	\$60
US First-Class	\$40	\$55	\$65
Int'l Air Mail	\$45	\$60	\$70
THREE-YEAR RATES			
Electronic Only	N/A	\$70	\$100
Printed Journal			
US Bulk	N/A	\$140	\$170
US First-Class	N/A	\$155	\$185
Int'l Air Mail	N/A	\$170	\$200

(*For First-Time Member Dual rate, add \$10)

See you at WBC 2022 in June!

<http://BSI.Org>

BSI MEMBERSHIP USA Rates/WBC 2022

Bromeliad Society International

Visit bsi.org to fill out form online (Note: Members with addresses outside the USA must register online)

1. MEMBERSHIP INFORMATION

- First-Time Member Existing Member Member Number (If available) _____
- Do not include my contact information in directory (If checked we will only include name and city)

MEMBER 1

Name _____ Phone _____ Email _____

Address Line 1 _____

Address Line 2 _____

City _____ State _____ Zip Code _____

MEMBER 2 For dual membership only

Name _____ Phone _____ Email _____

2. SPECIAL MEMBERSHIP RATES for One Year (Existing Members Pay Registration Fee plus Options only)

First-Time Membership USA Rate (Circle One Rate)			WBC 2022 Registration (Banquet included for each registrant) (Circle One Fee)		Additional Conference Options	Enter Amount
Journal	Single Rate	Dual Rate	Payment Date	Fee	Extra Banquet for a Guest, 6/11/22, \$100/person	
Electronic Only	\$15	\$25	Paid by December 31, 2021 (one registration)	\$315	Optional Bus Tour to Michael's Bromeliads, 6/8/22, \$30/person	
Printed Journal:			Paid from Jan. 1 st to May 25 th (one registration)	\$335	Optional Bus Tour to Tropiflora, 6/9/22, \$30/person	
US Bulk	\$35	\$45	Paid after May 25 th	\$395	<i>All Bus Tours are in the morning</i>	
US First-Class	\$40	\$50	Two Registrants (add circled rate)		Total of Selected Options:	
Total of Circled Rate & Registration Fee(s) & Options (if any): _____						

3. SELECT PAYMENT

- CHECKS (payable to Bromeliad Society International)
- CREDIT CARD (or pay online at www.bsi.org)

Billing address and mailing address are the same (if checked don't fill out billing address)

Billing Address Line 1 _____

Billing Address Line 2 _____

City _____ State _____ Zip Code _____

Credit or Debit Card: MasterCard Visa American Express Discover

Card Number _____ Expiration Date 00/0000 _____ / _____
Month Year

Name as it appears on the card _____ Signature _____

USA residents only may return this form with payment to:

Bromeliad Society International

Attn: Membership Secretary

2515 County Road 369

Cullman, AL 35057

BROMELIAD SOCIETY OF SOUTH FLORIDA

BSSF. INC.

2022 MEMBERSHIP FOR NEW MEMBERS ___ AND RENEWAL ___

Please print names: (Couples include both names)

ADDRESS: _____

CITY _____ STATE _____ ZIP _____

TELEPHONE _____ ADD'L PHONE _____

Year Joined BSSF: _____

Referred by: _____

E MAIL (you will not receive a newsletter without an email) _____

PLEASE HIGHLIGHT ANY INFORMATION ABOVE THAT IS DIFFERENT FROM LAST YEAR

Please create my membership in BSSF, Inc. for the period of March 1, 2022 to February 28, 2023.

Check the category: Single membership _____ \$25.00

 Dual membership _____ \$35.00

Dual members enjoy all the privileges of active membership, but receive only one copy of the Bromeliadvisory.

Dues must be received by March 1, 2022 in order for you to be included in the BSSF 2022 Roster. All fees are non refundable.

Please mail completed form and check payable to BSSF, Inc. to:

Patti Gonzalez

10565 SW 109 St., Miami, FL 33176

Or email this form to:

pgonza7782@aol.com

You can pay up to 5 years at the rates above.

What's Blooming

By Stephanie LaRusso

This month, in addition to the Herndon Collection, we feature a few plant photos from the Sorzano and Green collection. This month you will want to check on your Cryptanthus which may be blooming in your shaded garden! Also watch out for a wild Billbergia blooming show. If you go on vacation you may miss it though! They usually only bloom a few days but it's hard to beat the shapes and colors they display. Your Tillandsia collection is coming into bloom this season too so start to keep an eye on your collection. Remember to keep a watch out for cold weather. Cold fronts will move in unexpectedly throughout this month. Keep Growing everyone!



